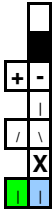


DIAGRAM #1: Back, front and
for sizes S, M and L



Every square in the pattern corresponds to 2 purled sts.

Black squares symbolise sts that do knot exist before increment or after cast offs.

Black squares symbolise sts that do knot exist before increment or after cast offs.

Knitted stitches on the front side, purled on the wrong side (row 1 is a row knitted from the front side!)

2 knitted sts are move in front of the purled background.

2 knitted sts are move in front of 2 other knitted sts.

The painted areas are knitted stitches. It may seems as if the colour has "poured utisde" the tiles, but this will give the best results in areas where colours meet! You can reposition the coloured tiles as you see fit, but it is difficult to increase the number of coloured tiles.

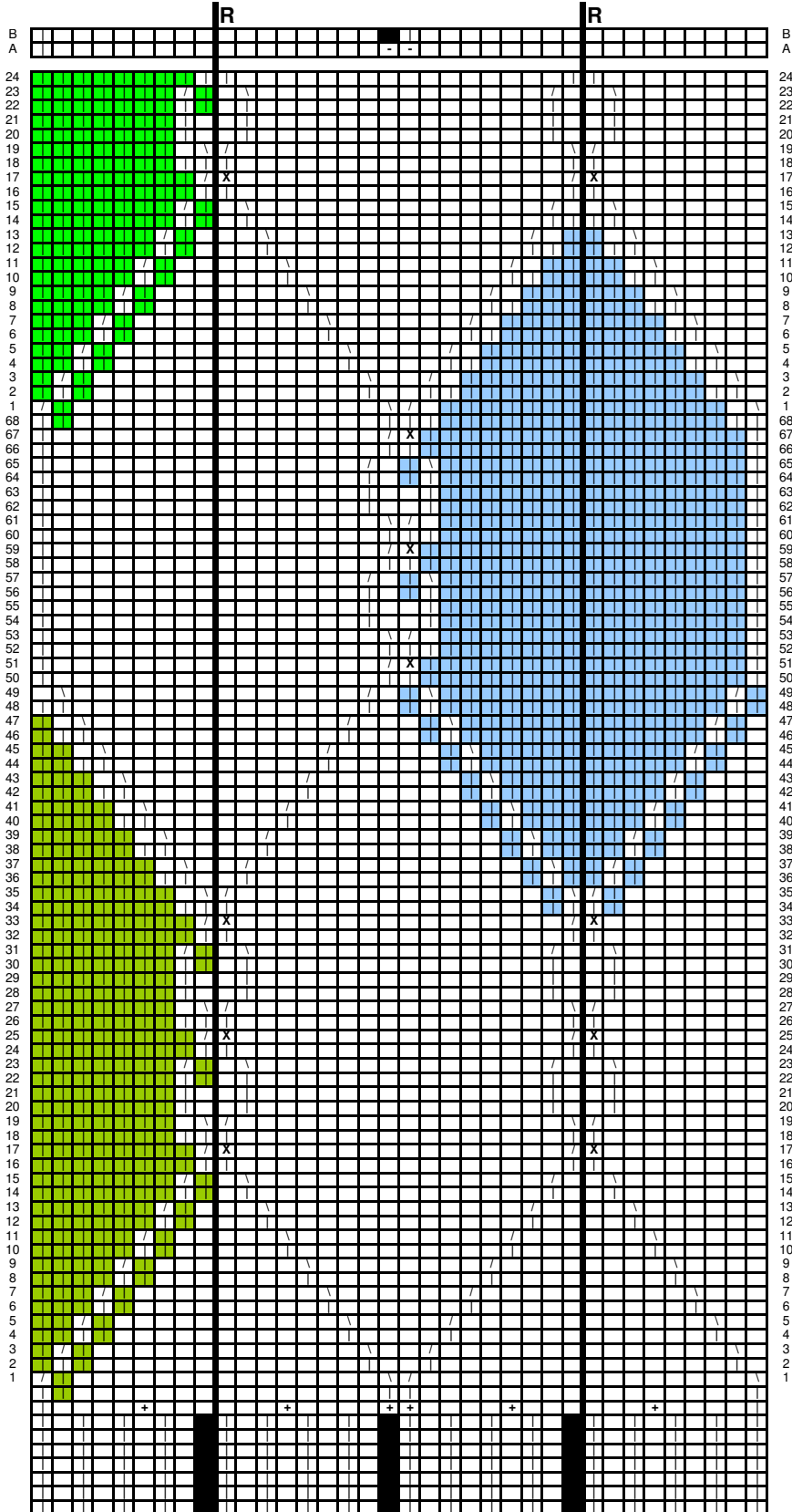
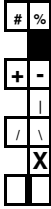


DIAGRAM #2: Hood. One and the same



- 1 single knitted/purled stitch.
- Black squares symbolise sts that do knot exist before increment or after cast offs.
- Increase/cast off one stitch. Left- and right-handed increments and cast offs are recommended!
- Knitted stitches on the front side, purled on the wrong side (row 1 is a row knitted from the front side!)
- 2 knitted sts are move in front of the purled background.
- 2 knitted sts are move in front of 2 other knitted sts.
- The broad line marked the middle of the hood (on the neck side).

RIGHT HALF:

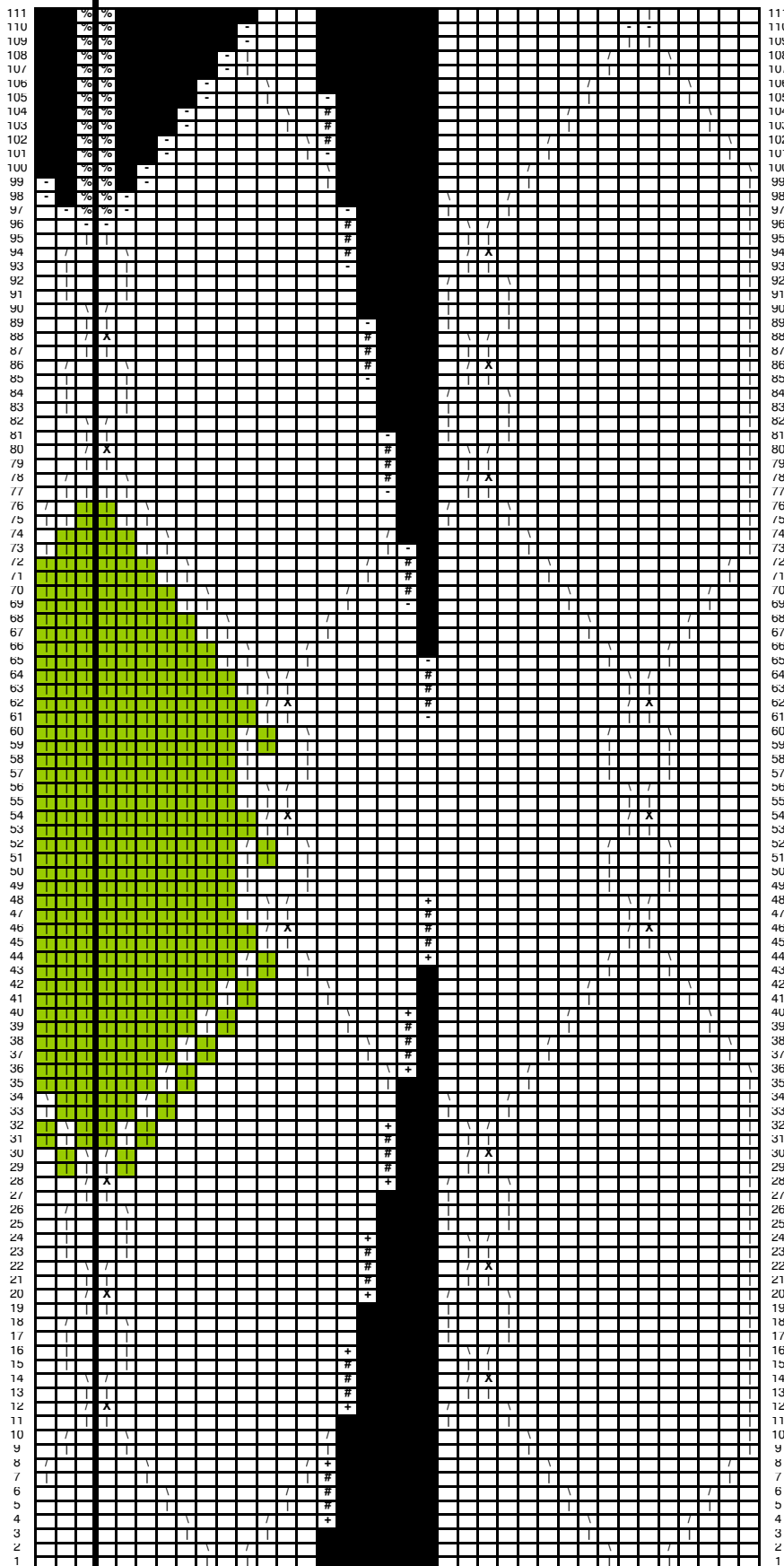
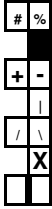


DIAGRAM #2: Hood. One and the same



1 single knitted/purled stitch.

Black squares symbolise sts that do knot exist before increment or after cast offs.

Increase/cast off one stitch. Left- and right-handed increments and cast offs are recommended!

Knitted stitches on the front side, purled on the wrong side (row 1 is a row knitted from the front side!)

2 knitted sts are move in front of the purled background.

2 knitted sts are move in front of 2 other knitted sts.

The broad line marked the middle of the bood (on the neck side).

LEFT HALF:

